

Eagle is a market leader in the supply, installation and design of PAS 68 gates, bollards and blockers. Eagle also design and manufacture a comprehensive range of LPS1175 Turnstiles for the security sector. Built on a 25 year reputation of providing unique solutions for automated gate industry the company has successfully installed and maintained security solutions for Power Stations, Police, Banks, Hospitals, Schools and Councils.

The Eagle security rated turnstile has been tested to LPS1175 Issue 8

Designed as a single up to SR4 and double to SR3

The turnstile can be constructed in sections allowing the system to be easily shipped and assembled on site.

In-house design team with CAD technology can develop a system bespoke to your requirements.



LPS1175: Issue 8
Cert/LPCB ref:1572

The 1491 Turnstile range is comprehensive, encompassing A1 to D10 (SR1–SR4) rated turnstiles in **single** and **double** configurations and a variety of hooped, paddle and straight bar rotors. The required strength of the D10 (SR4) product dictates the use of a paddle bar rotor. All the other externally accredited products A1–C5 (SR1–SR3) can have straight bar rotors and are available as single or double units.

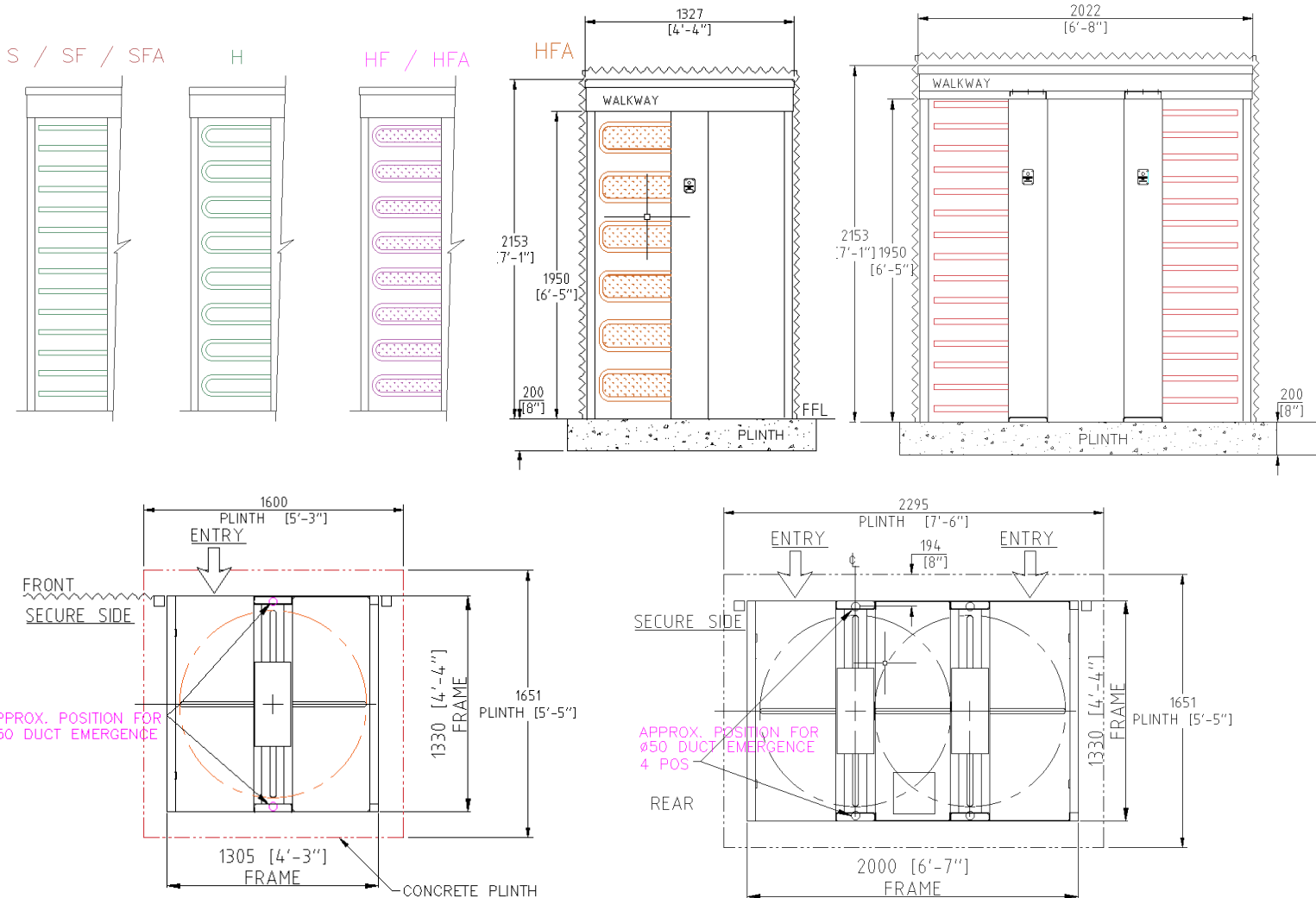
Key Features

- Full Height Single Security Turnstile to A1, B3, C5, D10 (SR1 to SR4 inclusive)
- Available as double units (SR1—SR3 only)
- 90° Locking head mechanism, electrically released in both directions
- Rotor sensing relays to provide a voltage free contact following the rotation of the rotor in either direction
- Status light LED panels to indicate when to proceed
- 240V AC mains supply 2 amp
- Fail locked on power failure
- Walkway canopy with down light
- Side panels clad in galvanised weld mesh (SR2–SR4): this is see through for CCTV
- Finish: Zinc primer and PPC standard RAL
- Stainless Steel to B3 (SR2)



Type 1491 Security Turnstiles (externally accredited)

Type 1491 Security turnstiles have been independently certified and accredited to LPS1175: Issue 8, certificate 1495a and can be found in the red book:



Security Rating	Model Number	Turnstile Walkway Infill Options
D10 (SR4)	1491-204-HFA	SINGLE FULL HEIGHT SECURITY T /S WITH 'HOOPED-D-BAR FILLED ARMOR' SHAPED ROTOR PADDLES
C5 (SR3)	1491-203-HFA	SINGLE FULL HEIGHT SECURITY T /S WITH 'HOOPED BAR-FILLED ARMOR AND SHEET' ROTOR PADDLES
C5 (SR3)	1491-203-SFA	SINGLE FULL HEIGHT SECURITY T /S WITH 'STRAIGHT BAR-FILLED ARMOR' ROTOR ARMS
B3 (SR2)	1491-202-HF	SINGLE FULL HEIGHT SECURITY T /S WITH 'HOOPED BAR FILLED' ROTOR PADDLES
B3 (SR2)	1491-202-SF	SINGLE FULL HEIGHT SECURITY T /S WITH 'STRAIGHT BAR-FILLED' ROTOR ARMS
A1 (SR1)	1491-201-H	SINGLE FULL HEIGHT SECURITY T /S WITH 'HOOPED BAR' ROTOR ARMS
A1 (SR1)	1491-201-S	SINGLE FULL HEIGHT SECURITY T /S WITH 'STRAIGHT BAR' ROTOR ARMS



Eagle Automation Systems Ltd
Focused on Protection and Security

